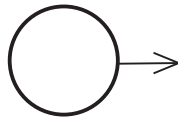


SEMIOTIC SIGNS USED IN THE ICONOGRAPHY OF
THE HUMAN ECOSYSTEMS KUCHKA: ENTITY ICONS,
FUNCTION ICONS, AND FLOW ICONS.

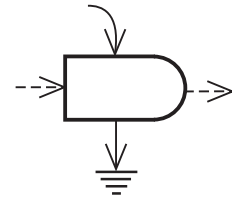
(Originally from H.T. Odum's Energy Circuit Signs and
the U.G.A. Information Ecology Group's Iconography)



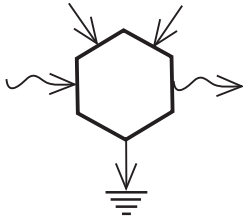
information source: imagination,
beliefs, observations, etc.



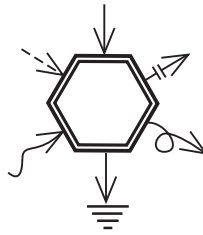
energy source outside system



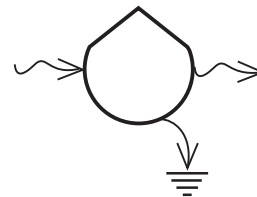
producer of organic
matter = primarily plants



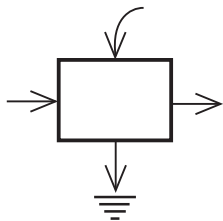
consumer of energy, all manner
of matter, and/or information



organized group of consumers
or an institution



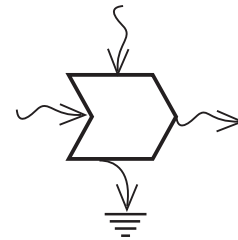
storage (energy, matter, information)



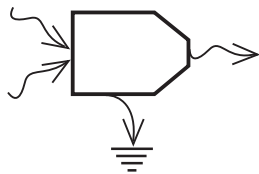
generic sign for subsystem



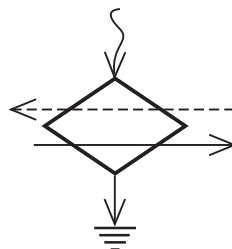
sink = heat sink, opportunity cost,
information loss, spontaneous chaos



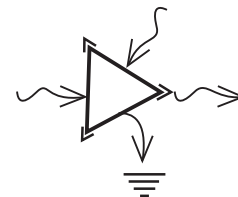
interactive intersection = two paths
coupled in outflow



comparison of inputs
(resulting in an output)

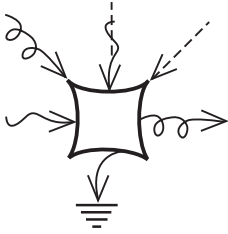


exchange transaction

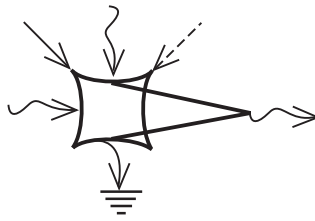


amplifier

SEMIOTIC SIGNS Cont.



a switch (selects the output result)



a transformation (including synergism, syncretism, and transmogrification)



information filter or editor



dialectical field: unification of opposites, the action of opposing forces, and inherent contradictions in being and knowing



portal = links to greater detail or other sites



propaganda



energy pathway/flow



information pathway/flow



flow of materials



episodic or periodic output or flow



geographic movement of individuals/groups



matter and information pathway/flow